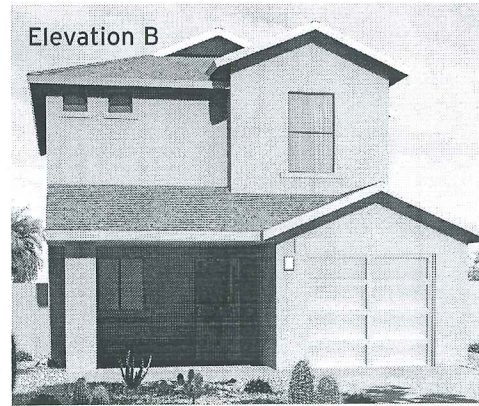
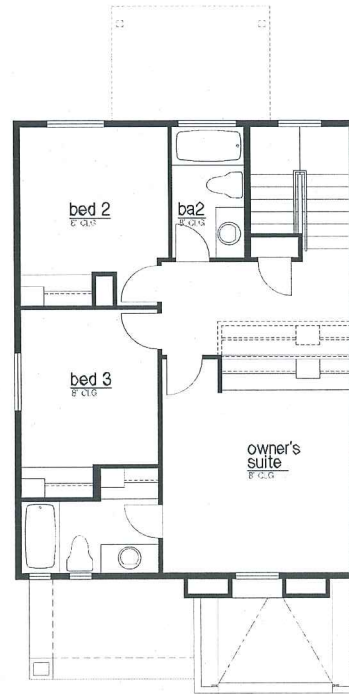
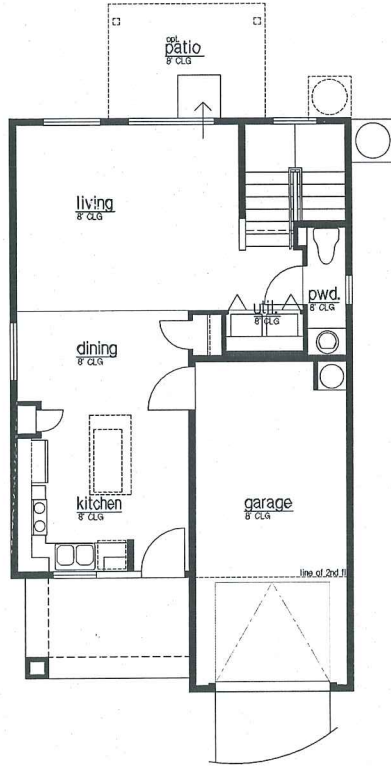


Sunnyside Pointe

AFFORDABLE TODAY, BUILT FOR TOMORROW

MESA – 1304 SQ. FT.



Renderings and floor plans are artists' conceptions only. Actual construction may vary. Plans, prices, options and features are subject to change without notice. Square footage and dimensions are approximate. Pepper Viner Management Co. II LLC, Broker Pepper Viner Development Co. II LLC, ROC #225632, Builder

