

SYCAMORE CANYON

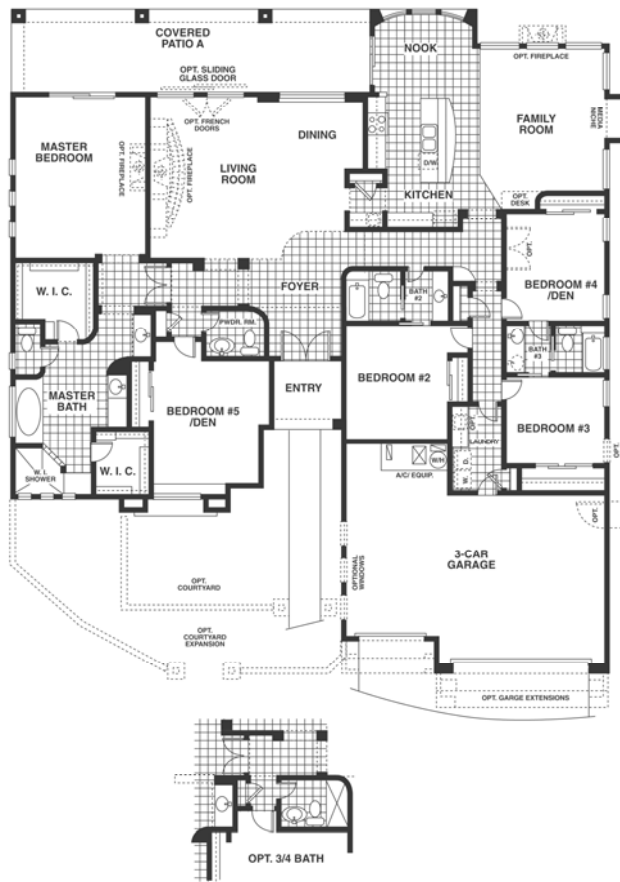


FORMER MODEL HOME (Lot 441)

- Plan: 3500 A (Ruby)
- Square Feet: 3500
- 5 Bedrooms, 3.75 Bath

TOTAL PRICE INCLUDING
DESIGNflex POSSIBILITIES:

~~\$619,900~~ \$449,990*



- 18"x18" Ceramic Tile Everywhere Except Bedrooms & Family Room
- Built-in Outdoor Spa
- 2-Sided Exterior Wall Fireplace at Family Room
- 42" Gas Fireplace with Entertainment Center at Living Room
- Entry Courtyard
- Double 8' Entry Doors
- ¾ Bath Option
- 2' Expansion to Garage
- Built-in Desk with Granite Countertop
- 42" Upper Maple Kitchen Cabinets
- Cooktop Layout with Double Wall Oven
- Granite Kitchen Countertops
- 3" Crown Molding at Kitchen
- Laundry Sink, Cabinets, & Countertop
- Intercom System
- Brass Floor Outlets at Living & Family
- Stereo Pre-wire
- Custom Interior Paint
- 8"x8" Glass Block at Master Tub
- Skylight at ¾ Bath
- Techshield at Roof
- Soft Water Loop
- Gas to BBQ
- Recirculation System
- 2 Exterior Ceiling Fan Pre-wires
- Double Flood Light
- Exterior Keyless Entry Pad for Garage
- Garage Service Door

Contact our Sales Associates for more information at 520-762-0232.

*Price valid with use of preferred lender or cash purchase.

Renderings and floorplans are artist's conceptions only. Actual construction may vary. Plans, prices, options and features are subject to change without notice. Additional lot premiums may apply. Square footage and dimensions are approximate.

EFFECTIVE: 4/2/09

PEPPER VINER HOMES

More Choice. More Quality. More Home.

