

# RIVER'S EDGE



## QUICK MOVE-IN HOME (Lot 45)

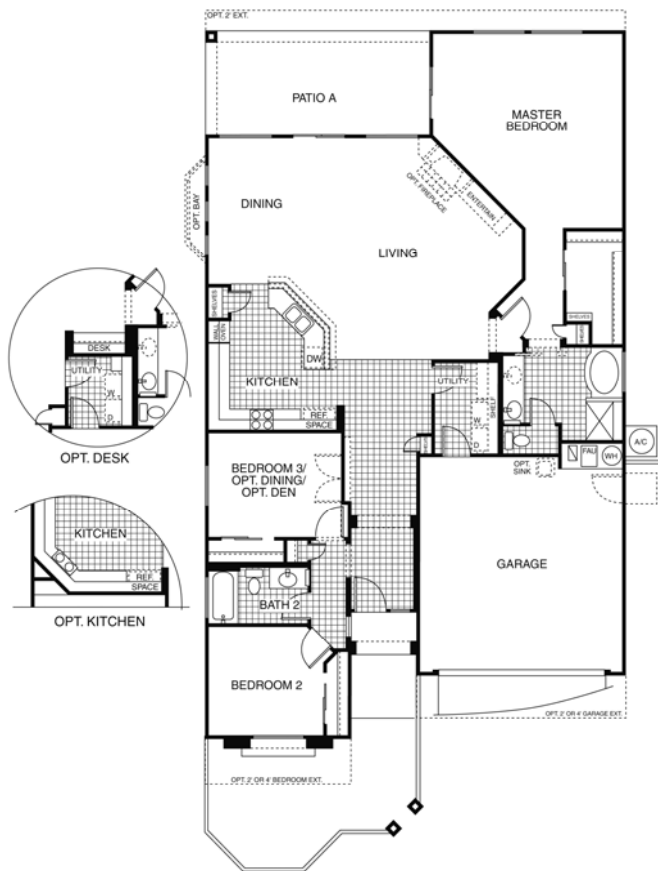
PEPPER VINER HOMES

More Choice. More Quality. More Home.



sahba

Energy Advantage Plus



- Plan: 1859 D (Ortega)
- Square Feet: 1939
- 3 Bedroom, 2 Bath

TOTAL PRICE INCLUDING DESIGN FLEX POSSIBILITIES:

~~\$407,122~~ \$369,990\*

- 20"x20" Diagonal Lay Porcelain Tile everywhere except Bedrooms
- 10' Ceilings
- Entry Courtyard
- 36" Upper Maple Cabinets at Kitchen with 2" Crown Moulding
- Corian Kitchen Countertops
- Double Wall Oven/Cooktop Layout
- Pendant Lighting at Kitchen Island
- Optional Kitchen Layout
- Desk Option
- Double Doors to Bedroom 3
- Double Sinks at Master Bath
- Pocket Door at Master Water Closet
- Extra Hose Bib
- R-38 Ceiling Insulation
- 2x6 Exterior Framing
- Exterior Ceiling Fan Pre-wire
- Brass Floor Outlet at Great Room

Call Sales Associates for more information at 520-531-1337.

\*Price valid with use of preferred lender or cash purchase.

Renderings and floorplans are artist's conceptions only. Actual construction may vary. Plans, prices, options and features are subject to change without notice. Additional lot premiums may apply. Square footage and dimensions are approximate.

EFFECTIVE: 4/2/09